

ES7-A0 Economic type Voltmeter Operation Manual



Features :

1. One line LED display , circulation display of the voltages , suitable for 3 phase 4 wire system.
2. AC sampling measurement , true effective value(RMS) display , wave distortion doesnot effect the accuracy
3. Can measure and switch display six voltage parameters in cycle. Measuring parameters include parameters of L1-N、L2-N、L3-N、L1-L2、L2-L3、L3-L1;
4. Can set the circulation display delay time freely
5. Support PT (voltage transformer) , can set the PT ratio freely.
6. Unique method of installation, can complete the installment easily without tools

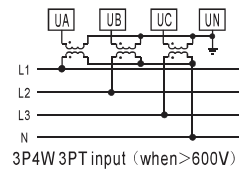
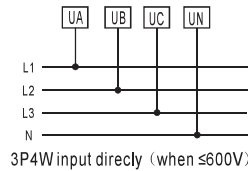
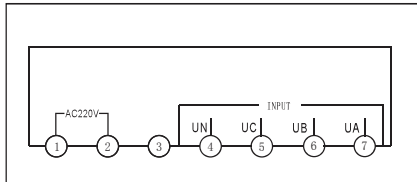
Specifications :

Parameters	Specification
Measure range	Direct input AC 10~300V (L-N) 、 AC 10~500V(L-L) , support PT
Accuracy	0.5%F.S
Measure display mode	RMS measurement or three-digit LED display
Resolution	Max. display resolution of voltage is 1V
circuit consumption	current < 0.5VA , voltage < 1VA
Power supply	AC 220V±10% , 50/60HZ
power consumption	< 3VA
overflow display	HHHH or LLLL
Work environment	Temperautre: -10-50℃ , humidity≤85%RH

Installation and wire connection :

Shape and hole cutout dimension Unit: mm

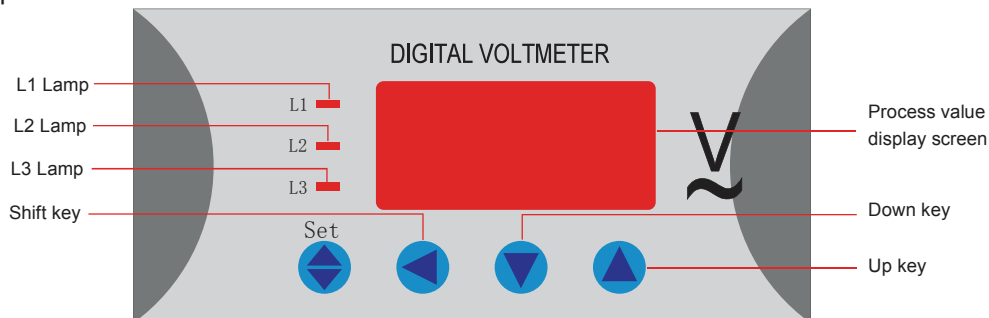
Panel mounting type	Panel dimension		Case dimension			Hole cutout dimension	
	W	H	W	H	D	W	H
72 72 square	72	72	67	67	80	68	68



Note: 1. Auxiliary power supply (Power): Instruments need an additional auxiliary power supply to work normally, which is AC 220V.

2. Signal Input (INPUT): UA, UB and UC are fire wire terminal of three-phase AC voltage input signal, UN is neutral wire port. Line voltage should not be higher than the maximum value (AC600V, or you should consider of using PT and installing fuse of 1A on voltage input port.

Panel description :



Note: When L1 lamp is on, it displays the measuring value of L1-N phase voltage
 When L2 lamp is on, it displays the measuring value of L2-N phase voltage
 When L3 lamp is on, it displays the measuring value of L3-N phase voltage
 When L1 and L2 lamp is on, it displays the measuring value of L1-L2 line voltage
 When L2 and L2 lamp is on, it displays the measuring value of L2-L3 line voltage
 When L1 and L3 lamp is on, it displays the measuring value of L1-L3 line voltage

Operation Illustration

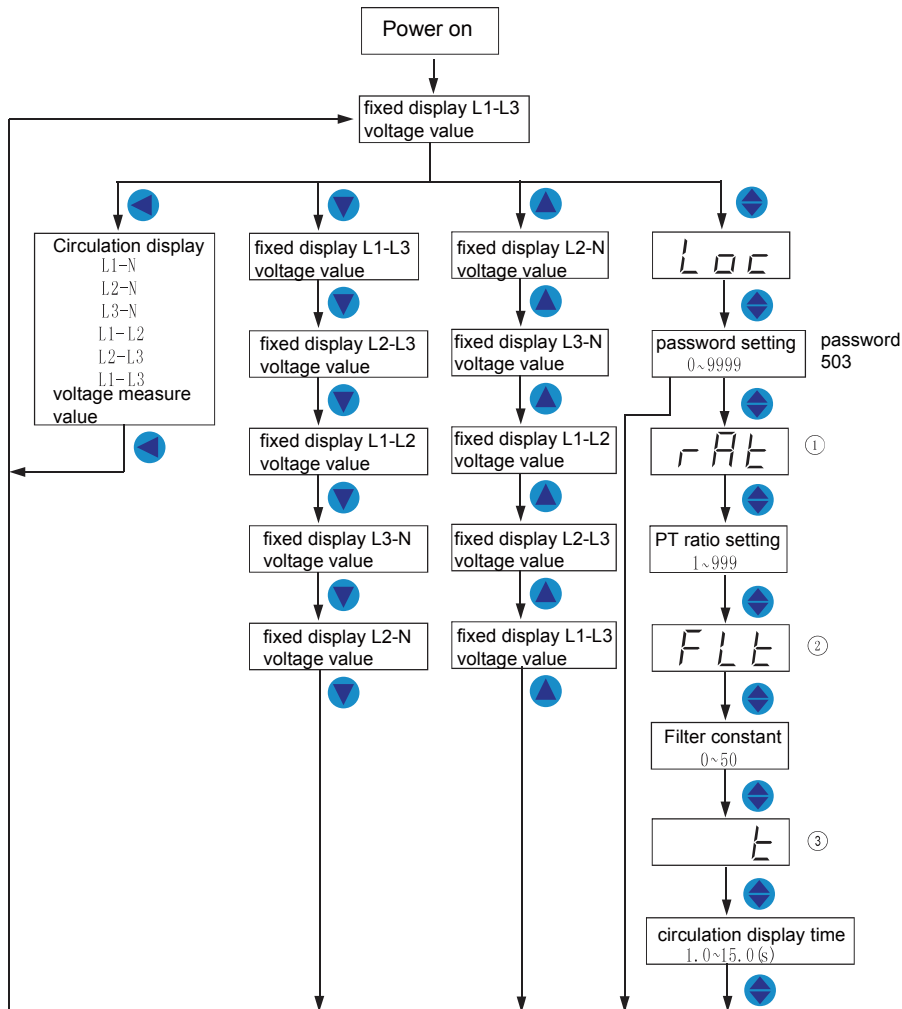
Continuously press “▲” or “▼” key can shift the display among L1-N, L2-N, L3-N, L1-L2, L2-L3 and L1-L3

Press “◀” key can circulation display automatically among L1-N, L2-N, L3-N, L1-L2, L2-L3 and L1-L3

Note:1). the password for setting is 503

2). If without any operation in setting status , it will exit to normal measurement status.

Operation Process :



No.	symbol	parameter name	Setting range	Illustration
1	rAtE	PT ratio setting rA tE	1~999	use to set the voltage transformer ratio. ratio value=primary voltage value/secondary voltage value . Default setting is 1
2	FILT	Filter constant FILT	0~50	used to set the filter constant of the meter to control the stability of the display. The bigger the constant value ,the more stable of the display. But reaction time is slower
3	t	circulation display time t	1.0~15.0(s)	Press ▲ to set the circulation switch display delay time. The bigger of the value ,the circulation speed is slower.

Caution

1. Please confirm if the power supply, input signal and each terminal wiring of the meter are correct and reliable before applying the power.
2. The instrument must be preheated for 15 minutes to guarantee the precision of measurement.
3. The instrument should not be rapped, knocked and vibrate excessively and its using environment should meet the technical requirements.